

ARRIVALS

Pilots should check NOTAMs prior to departure for WATTS BRIDGE. Aircraft may not arrive or depart within the hours of 0920 to 1600L on SAT 16th or SUN 17th October 2021 (the Airshow Display Periods).

Display practice will take place on Fri 15th of October 2021 from 1400 to 1730L. Aircraft arriving during this period should allow for 30min holding.

All Flying-In aircraft arriving on the Airshow Days must be on the ground by 0920L. Arrival is on WATTS UNICOM (CTAF: 127.3 Mhz). Unicom will nominate landing runways providing traffic advice only.

WATTS UNICOM will operate from 14:00-16:00L Friday 15th of October 2021, and 08:00 to 16:00L Sat 16th and Sun 17th of October 2021. (See Frequency table below).

BRISBANE AIRSHOW FREQUENCIES

WATTS UNICOM (CTAF): 127.3Mhz
WATTS GROUND: 127.9.0Mhz
RINGMASTER (Display Freq): 132.0Mhz (Back-up 125.05Mhz)
AIR to AIR CHAT: 123.45Mhz.

Arriving aircraft may taxi onto Taxiway Alpha via any taxiway gate and then proceed to their assigned parking.

AFTER LANDING

After landing CAUTION crossing parallel runways. When clear of the runways, taxi onto taxiway Alpha and call WATTS Ground 127.9Mhz to advise your intentions for:

- Day Parking,
- Overnight Parking,
- Underwing Camping Parking,
- Display Parking,
- Static Display Parking, or
- PlaneSales Aircraft Market.

Please follow Ground and Marshalling Instructions to your parking. (See Fig 1 over page for Airfield & Parking layout).

AIRCRAFT PARKING – DAY & OVERNIGHT

Aircraft arriving for the Day and or Overnight parking must be on-ground by 0920 and may not leave until 1600. Aircraft will be directed to Fly-in Parking 1 or 2 on an airfield needs basis.

Access to Fly-in Parking 2 is via the extension of Taxiway A to the northwest. (See Fig 1). Please follow the instructions given by 'Ground' and Aircraft Marshalls

UNDERWING CAMPING

Only aircraft whose occupants will camp under the wing of their aircraft may enter the Underwing Camping and Parking area.

Arriving aircraft are to enter the Underwing Camping area at or abeam Gate 8 using Taxiway E or RW21/03 (as available).

Departing Aircraft are to exit the Underwing Camping area at or abeam Gate 9 using Taxiway E or RW21/03 (as available).

PLANESALES AIRCRAFT PARKING

Aircraft arriving for the PlaneSales Aircraft Market must be parked within the PlaneSales area by no later than 09:20 and may not leave until 1600. Aircraft will be directed to the PlaneSales area from Taxiway Alpha. Please follow the instructions given by 'Ground' and the PlaneSales Marshalls. Once parked, Aircraft Engines may not be started until after 16:00 and only under the direction of the PlaneSales team.

FLIGHT & STATIC DISPLAY AIRCRAFT PARKING

Aircraft which have been accepted for Flight and Static Display will have pre-allocated parking areas and should also contact WATTS Ground 127.9Mhz for directions to their parking areas.

Flight Display Aircraft will be met on arrival to assist with your requirements.

Static Display Pilots and their passengers will need to enter the airshow from the Fly-in Gate. (See Overpage).

AFTER PARKING

Ensure your aircraft is secure. Aircraft tie-down points are not available. You will need to bring your own aircraft tie-down stakes.

When leaving your aircraft and once within the airshow area, Take all items you require with you. You will not be able to access your aircraft during the Display Period ie between 0920 to 1600. The PIC must escort all passengers to/ from the Aircraft and proceed to the Fly-In Gate.

WARNING

DRAINAGE DITCHES FLANK EACH TAXIWAY

VHF RADIO IS A MANDATORY REQUIREMENT AT WATTS BRIDGE

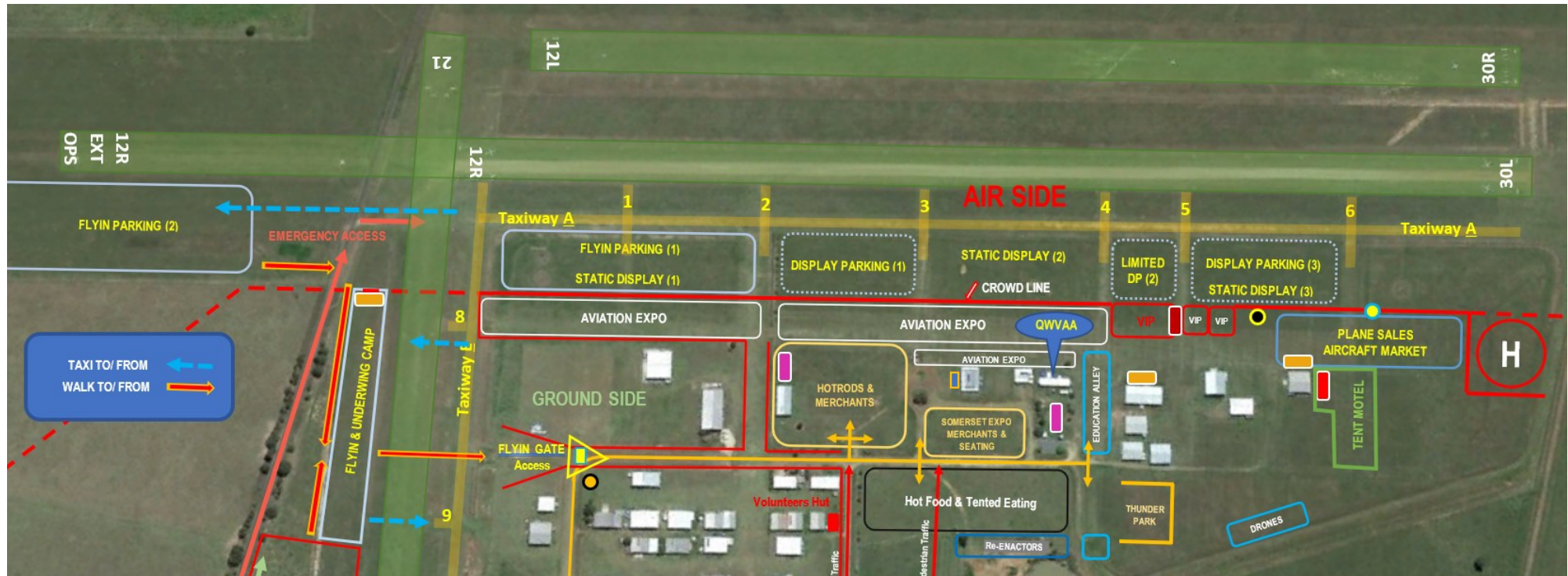
AIRCRAFT ENGINES MAY NOT BE STARTED WITHIN THE OVERNIGHT AIRCRAFT CAMP AREA. AIRCRAFT MUST BE TOWED CLEAR FOR START/ DEPARTURE.

**SECURITY PATROLS ARE IN FORCE 24/7 AT WATTS BRIDGE FOR AIRFIELD, AIRCRAFT AND PATRON SAFETY
ACCESS IS STRICTLY IN ACCORDANCE WITH THE BRISBANE AIRSHOW TERMS AND CONDITIONS**

DEPARTURES

Aircraft departing Sat 16th or Sun 17th of October 2021 must do so before 0920L or after 1600L. Aircraft may not arrive or depart between 0920 to 1600L on Sat or Sun. Departing aircraft should contact Ground for before taxi for operational information. R/W 12R/ 30L extension is available when operationally required. For departures off RW 12R Pilots are requested to use the normal (displaced) threshold (900M) unless the extension is required for full length (1530m). Note: Intersection departures from RW 12R/30L are not approved.

Pilots should prioritise RW 30R/ 12L for departures Northwest, North, East and Southeast and RW 30L/ 12R for departures South, Southwest and West. Pilots should consider “last-light” implications at destination. If in doubt over-night!



IMPORTANT PLANE SALES AND AIRCRAFT CAMPING NOTES

UNDERWING CAMPING

- No person is allowed on-site without an Identifying Lanyard or wristband.
- Access to aircraft is not allowed during Display Periods.
- Campfires & Animals are prohibited.
- Private portable generators are not permitted between the hours of 7.00 pm and 6.00 am.
- Loud and unruly behaviour will not be tolerated. Please respect the privacy of fellow campers.
- AIRCRAFT ENGINES MAY NOT BE STARTED WITHIN THE OVERNIGHT AIRCRAFT CAMP AREA. AIRCRAFT MUST BE TOWED CLEAR FOR START/ DEPARTURE.

PLANE SALES

- The Plane Sales Aircraft Market area is for second hand pre-loved aircraft only.
- No under-wing camping is permitted within the Plane Sales Aircraft Market area. Overnight camping can be arranged via an additional cost within the Underwing Camping or Tent Motel.
- Once your Aircraft is in position within the PlaneSales Aircraft Market area it cannot be moved until after the Airshow has ended for that day.
- Other than for arrival and departure, Engines may not be run or ‘tested’ in the Plane Sales Aircraft Market area. Arrivals and departures must be outside Airshow hours ie 09:30 – 16:00.